

INTRALOGISTICS AND STORAGE SOLUTION



AUTOMATIC WAREHOUSE SYSTEM



WATCH
THE VIDEO :)

UAB, "EEC Engineering"

Kalvarijų str. 125 / 2, Vilnius, Lithuania

www.euroec.lt

*I cannot say whether things will get better if we change;
what I can say is that they must change if they are to get better."*

Georg Lichtenberg, scientist, philosopher and publicist

4-The Fourth Industrial Revolution, which is happening in the world right now, leads toward the liberation of the human from routine manual work and toward the increased competitiveness. Helping our customers to keep up with time, we suggest making a transition to Industry 4.0 and to the unmanned production based on our solutions. We would like to introduce one of our solutions:

AUTOMATIC WAREHOUSE SYSTEM

AUTOMATIC WAREHOUSE



Container or pallet handling operations inside the warehouse are performed by a specially-designed robot that **doesn't require much space for movement**.

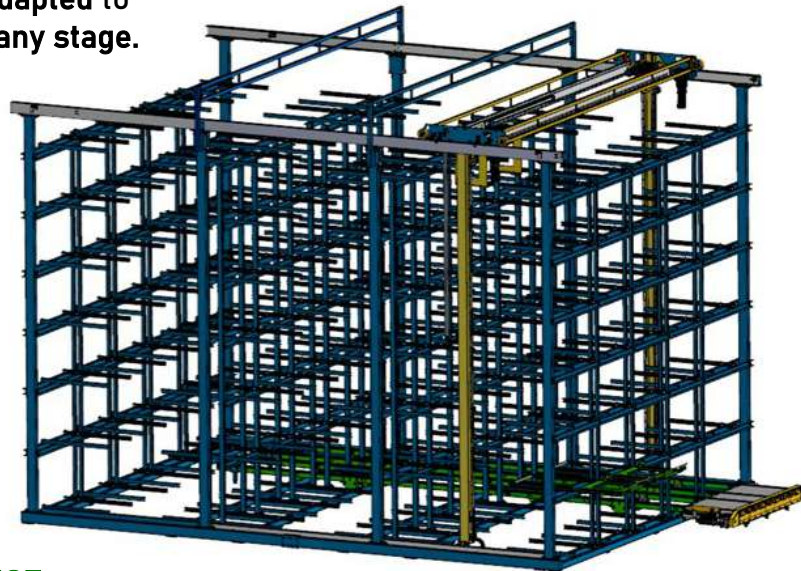


The automatic warehouse is designed so as to **prevent operators from entering into the storage area**, where a simple, inexpensive robot manipulator does the job. The robot requires **minimal maintenance**.

The warehouse can be **adapted to the company's needs at any stage**.



There is a possibility to add a second (third, ...) robot manipulator to **increase the delivery speed** and ensure **continuous operation**.



INTELLIGENT WAREHOUSE



A dedicated **warehouse management program (EEC EMS)** is in charge of the warehouse intelligence.



The warehouse uses IoT protocol, which allows to receive a **wide access to the information on the items stored** via mobile app, PC or internet, as well as **synchronize with other applications**.



EEC EMS allows to **integrate a few automatic or non-automatic warehouses in one system** in order to **synchronize their operations**.

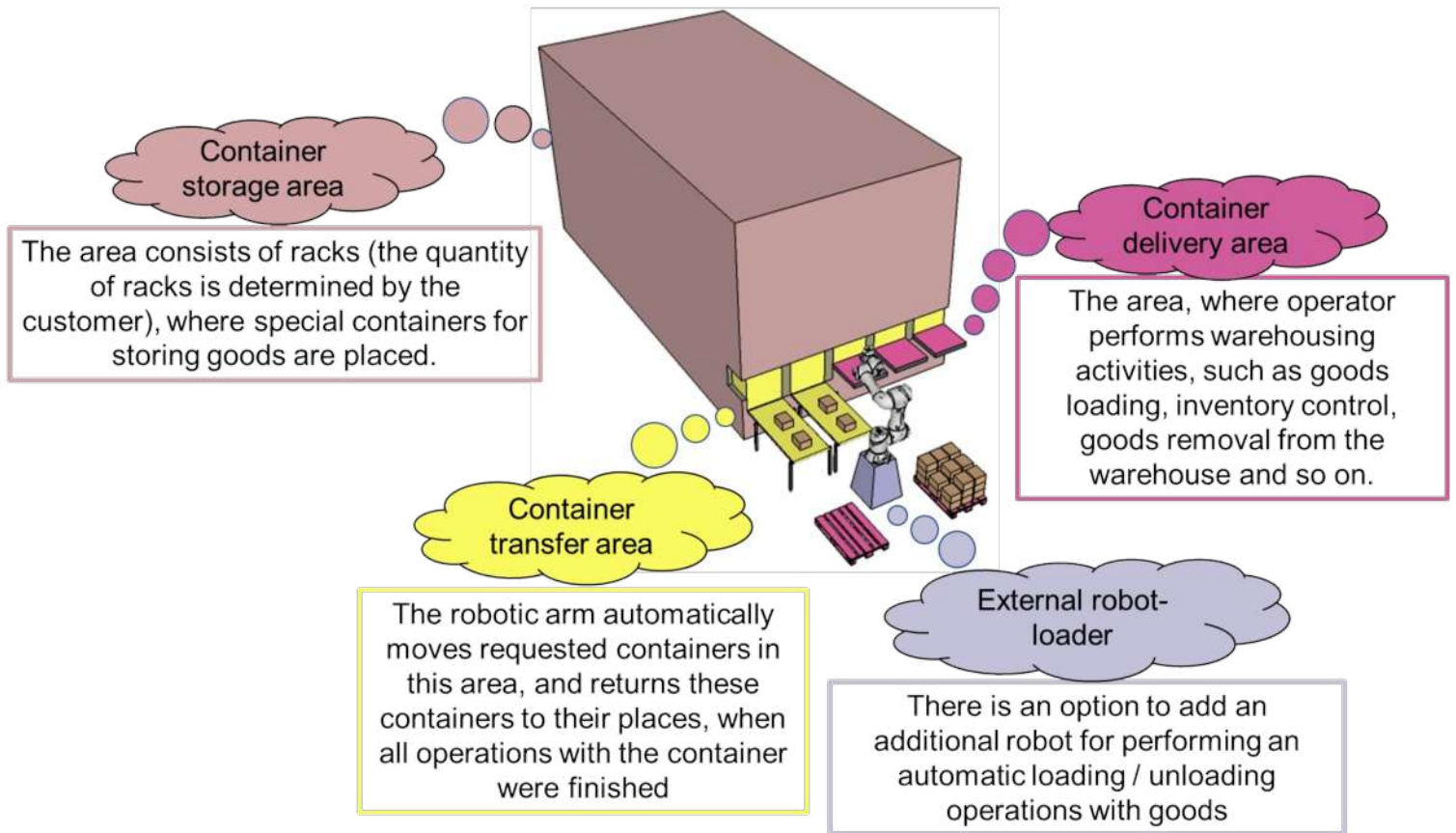
All the warehouse data can be viewed (or edited) by the authorized users who have different access level assigned.



CONNECTION TO AN ACCOUNTING DATABASE

Accounting and warehouse databases can be **synchronized** to have the waybills and accounting reports generated automatically.

WAREHOUSE DESIGN



TECHNICAL PARAMETERS OF THE WAREHOUSE

PARAMETER	BASIC CONFIGURATION	FEASIBLE CHANGES (BASED ON CUSTOMER NEEDS)
Length	10 meters	From 3.5 meters and beyond without limits
Width	5.5 meters	From 2 to 5.5 meters
Height	5 meters	From 2 to 5 meters
Length of the container	800 millimeters	Up to 1200 millimeters
Width of the container	600 millimeters	Up to 800 millimeters**
Height of the container	450 millimeters	No technical limitations
Shape of the container bottom	Bottom with supports	Bottom with supports of flat bottom
Load weight	50 kilograms	Up to 100 kilograms*
Number of places for containers	270	Depends on the size of the warehouse
Power supply	220 V	220 V, 400 V AC or 48 V DC. No pneumatic network required

* Load capacity over 100 kg is considered individually

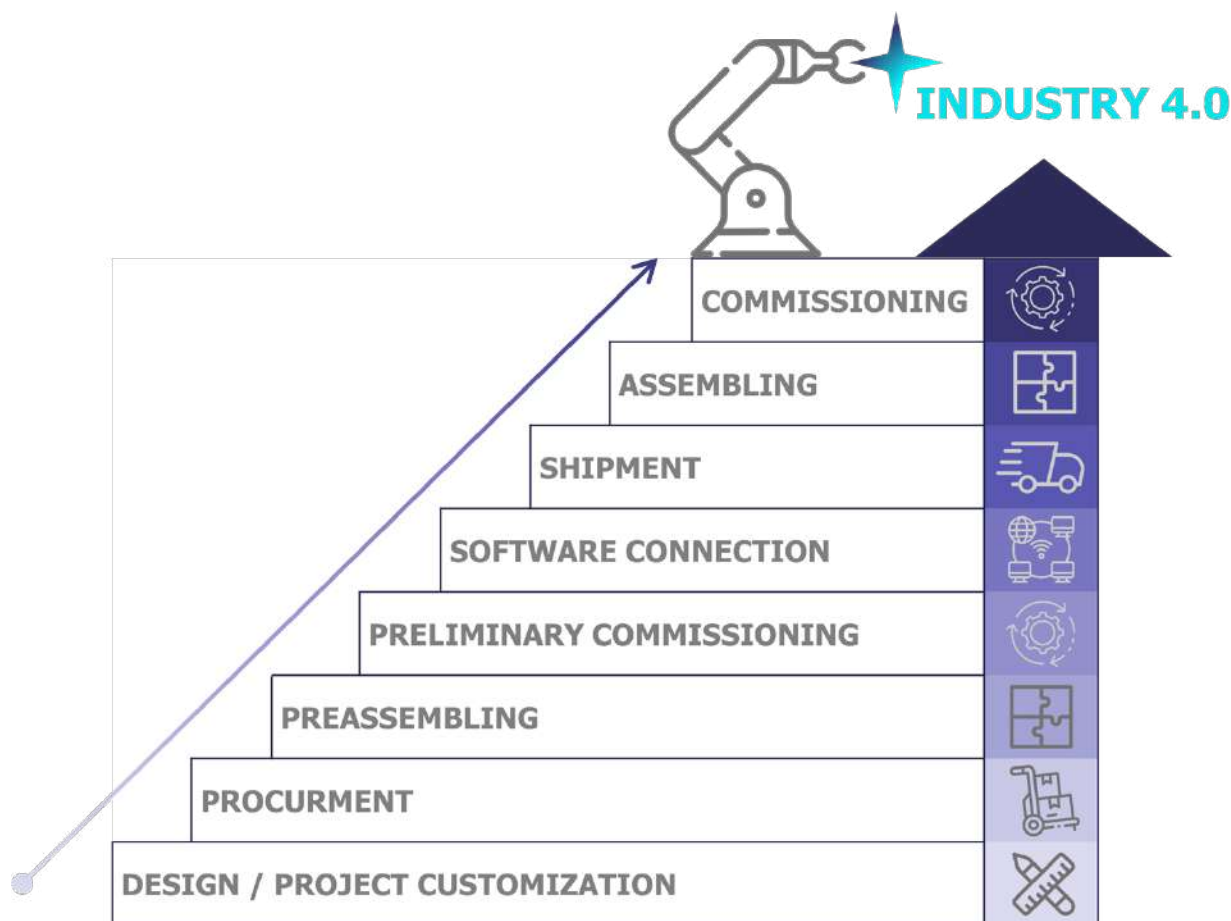
** At the weight of 70 kg, the width of the container should be 800 mm

HOW WE ARE WORKING

The business model of our company supposes manufacturing to order. Describe your task to us, and we will find the best solution for you, present it to you and adjust the solution according to your requirements.

THE FULL MANUFACTURING CYCLE WILL LAST 4,5-12 MONTHS*.

**The exact duration depends on the complexity of the solution designed for You.*



AFTER COMMISSIONING WE PROPOSE FOLLOWING SERVICES:



STAFF TRAINING

We will provide you with the detailed instructions on the warehouse functioning. We will also support your specialists in their operations during the pre-defined period of time.



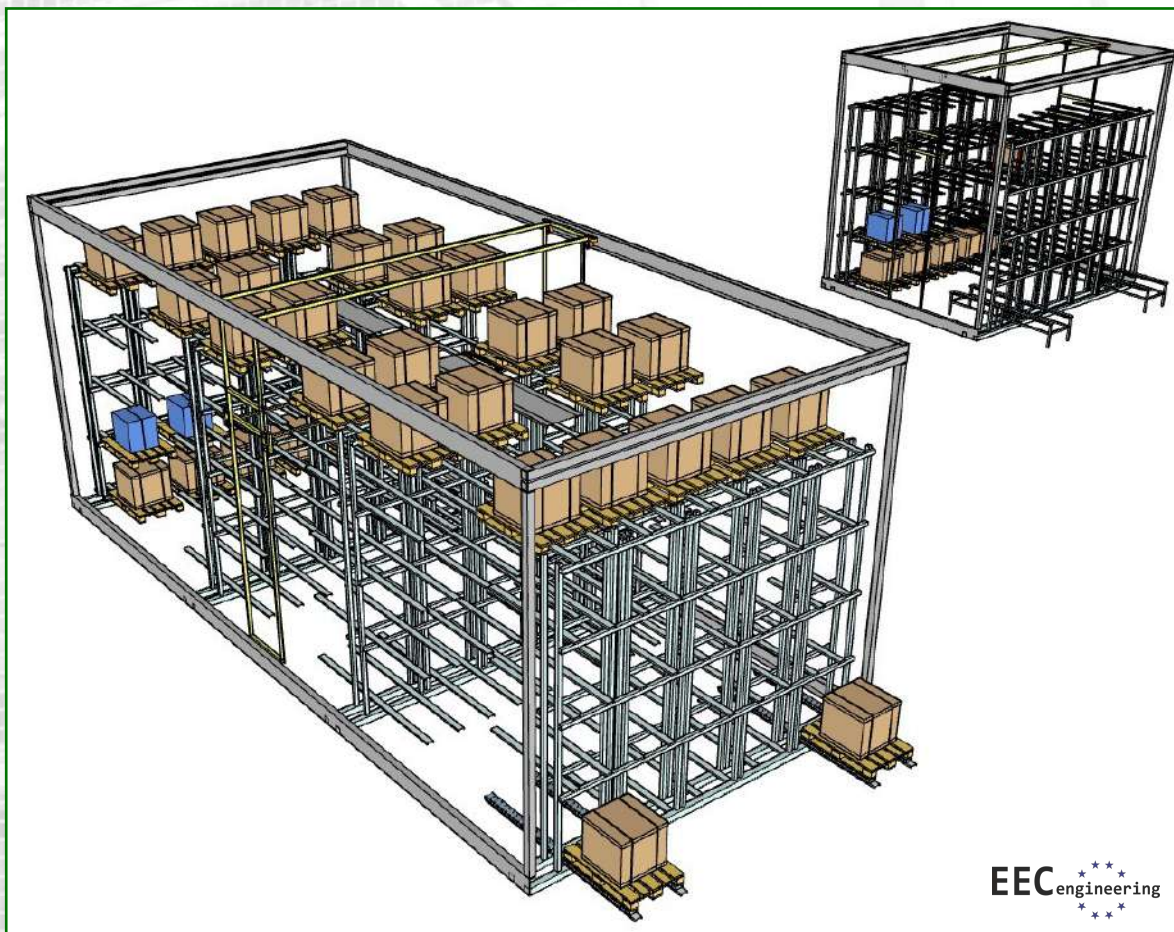
SERVICE

If there are technical problems, our team will efficiently help you fix them.



REMOTE SUPPORT

You can get prompt advice on warehouse operations at any time.



EEC engineering

Please contact us by email or phone if you would like to receive more details on the automatic warehouse system.

**Tel.: +37067035785
E-mail: info@euroec.lt**

Please use the QR code below to know more on other solutions in the area of automation that we developed:



**UAB, "EEC Engineering"
Kalvarijų str. 125 / 2, Vilnius, Lithuania
www.euroec.lt**